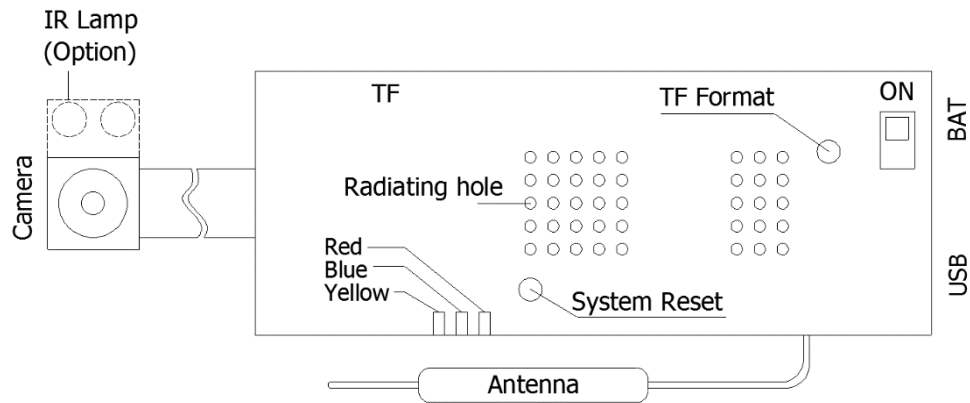


# FHD WiFi CAM User Manual



## Indicator and key definition

### A: Indicator color and status

1. Yellow indicator light-AP mode, when there is a TF card, it will automatically record after booting and flashes 3 times, then turn off, no card is on
2. Blue indicator—P2P mode, when there is a TF card, it will automatically record after booting and flashes 3 times, then turn off, no card will be on
  - \* The blue light keeps flashing fast: it means the network connection is not normal, reset the WiFi password after "Reset"
3. Red light — red light goes out when fully charged (it is recommended to charge faster when the power switch is turned OFF)

### B. Key definition

1. Power toggle switch: "ON" direction is power on
  - \* When there is a battery, the switch is in the ON direction, which means it is turned on
  - \* When there is no battery, when the switch is in the ON direction, the USB can be connected to the mobile power supply or the 5V charger to start the work
  - \* When the computer is turned off, it can read the TF card file, but it can't be read when connected to the computer in the ON direction
2. Reset button: Press and hold for 4 seconds in the power-on state to release it to restore the factory state and enter the AP mode
3. TF format button: long press 4 seconds to start formatting TF card

## Function and operation

First, please install the mobile phone software: download and install MXCAM for free in "Google Play", or download XRCam in "APPstore"

**The first time you can use the following steps:**

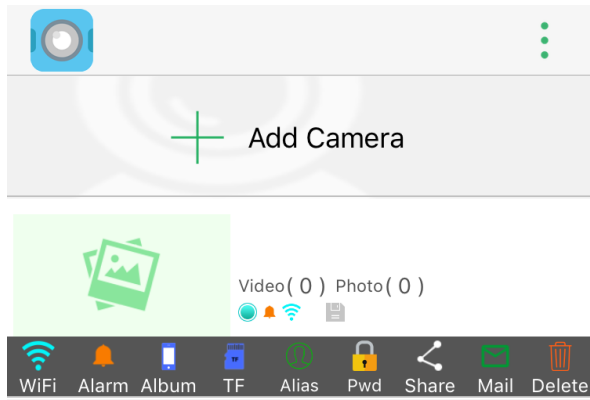


Figure 1

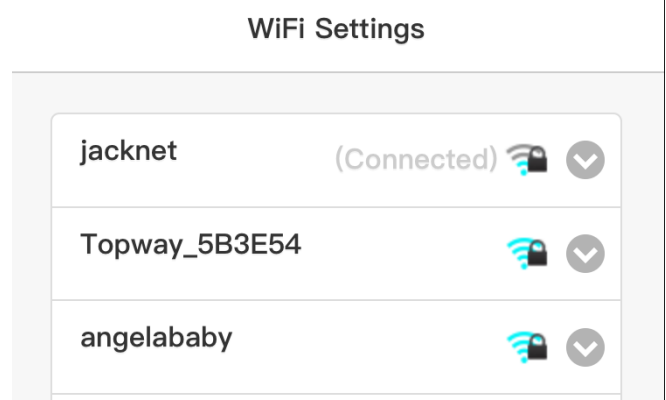


Figure 2

WiFi	WiFi connection	Password	Set the camera password
Alarm	You can choose to arm or cancel arming.	Share	You can share and add via QR code.
Album	Photos or video files on the mobile phone	Mail	Refer to the mailbox service provider's guidelines for setting the alarm mailbox
TF	Audio and video folder in TF card	Delete	Delete the current device in the device list
Alias	Change the camera name	⋮	This button in the upper right corner, you can view the version information (Android can set whether to open the message push)

Figure 1 Menu description

**Step 1: AP connection (point-to-point)**

- A. Open the WLAN option in the phone settings, connect the name SZ \*\*\* hotspot, some brands of Android phones (such as Huawei) will prompt "The current WLAN is not available for Internet access. Do you want to continue to use this WLAN?", You must select "Use", otherwise Unable to connect to the APP. If you accidentally choose "not to use", you need to select this hotspot in the WiFi list and set to "do not save" to reconnect.
- B. Open the mobile phone software, each time you open the APP, it will automatically scan for new devices. If it is not automatically added, please click to add a camera in the LAN

**Step 2: P2P setting After the point-to-point connection is successful, you can start to set the P2P mode. The steps are as follows:**

Click the yellow arrow on the right of the APP to pop up the "Figure 1" menu, click on the leftmost WiFi icon in the menu, select the hotspot and enter the password (Figure 2), the device will turn into a blue light, if the entered password is correct, P2P remote access

- \* If you enter the wrong password, you need to rebind (long press the reset button for 4 seconds in the power-on state and then reconnect)
- \* You must set a password (Figure 3) to see the video screen when you turn on the device for the first time (you cannot access and add this device without setting the password after setting the password)
- \* After opening the camera screen, you can see the screen in Figure 4, the specific keys are defined in the following table

## Set camera password

Enter the new password

Confirm password

Sure

Figure 3

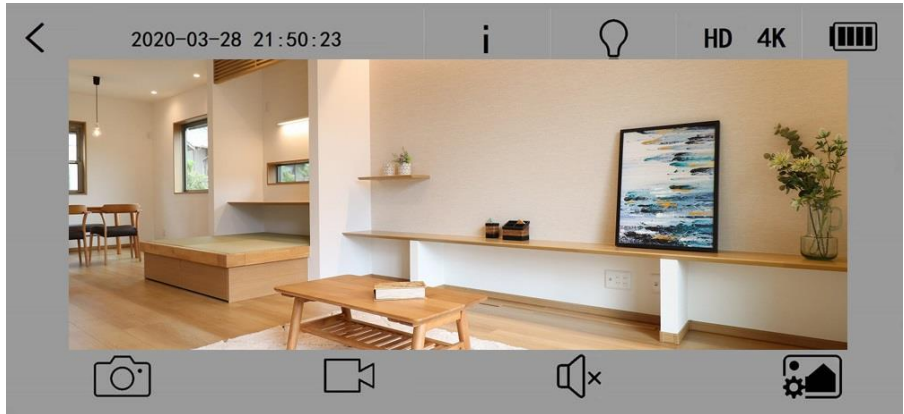


Figure 4

	Back to device list		Firmware version
	Turn on or off infrared light	<b>HD/4K</b>	mobile phone resolution selection
	Real-time camera photography on the mobile phone		Real-time video recording on the mobile phone
	Turn real-time sound on or off Image angle setting		Image angle setting
	Battery level information		

Figure 4 Icon description

Video Format	MOV
Video resolution	1920*1080P @H265
Player software	Recommend GOM Player or other players that support H265 encoding
Charging parameters	DC-5V/1A
Interface type	MicroUSB
Storage type	TF
Maximum memory support	256GB exFAT
Single machine weight	11g

## Precautions

- Use occasion: Please strictly abide by relevant national laws and regulations, and do not use this product for any illegal purpose.
- About the battery: As the usage time increases, the battery working time will be shortened. It has not been used for a long time, please fully charge it before use.
- File security: This product is a non-professional storage device, please back up files on the PC side in time
- Other matters: This product is a precision electronic product. Do not subject to strong impact, and do not use it in a strong magnetic field, strong electric field, or high humidity environment.

# A1029 Manual

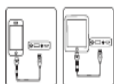
## Overview

### Power Bank Functionality:

- To use the device and to view the battery power level, turn the switch to ON.
- LED lights will indicate the reserve power. After 3 seconds, the LED lights will all turn off. If no LED lights turn on, please recharge the device.
- When the switch is turned OFF, the remaining power level will be shown. After 3 seconds, the LED lights will all turn off.

## Recharge devices

- Turn the switch to ON. The power level will be indicated by the LED lights for 3 seconds.
- Once the power bank has been fully depleted, the LED indicators will not light up
- Turn the switch to OFF and recharge the power bank.

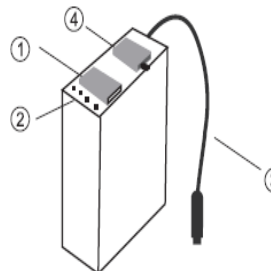


Total output = capacity x 75% (battery step-up converting consumption) x circuit-board transferred consumption

## Products Specifications

Model Number	A1028
Type	Lithium Battery
Input	DC 5V 1000mA (MAX)
Output	DC 5V 1000mA (MAX)
Capacity	10000 mAh
Life cycle	800 until the nominal capacity may drop to around 50%
Working Temperature	-10~45°C (14~113°F)
Size	88*47*22 mm (3.5*1.9*0.9 in)
Weight	180g (6.4oz)

## Products Specifications



- Micro USB Input
- LED indicator light
- DC Output
- Switch

LED indicator color	one light	Two light	Three light	Four light
Status	1~25%	50%	75%	100%

## Recharge Power Bank

- Indicator lights shows remaining power during charging process.
- When all lights are on, Power bank is completely recharged.
- Genuine power adapter or cable are preferred when wall plug is used as recharging source.
- Charging time is approximately 9-10 hours.

## Reminder

- Lithium batteries does not have memory effect. It means whenever you recharging battery does not affect its capacity.
- when phone battery is below 15%-20%, power bank is needed to start recharging the battery. If phone battery is too low. It may become deeply discharge, which may damage phone battery.
  - Please avoid long time charging when the phone battery is completely recharged. Overcharging may damage both phone battery and power bank. Please avoid overcharging in order to protecting the battery life when it is completely charged.
  - Capacity of power bank can not be fully converted due to the consumption of converting process. The process may also generate heat over power bank, and this considered as normal mechanical phenomenon.

## Safety Notice

Caution!

- Please recharge power bank every 3-month in order to maintain its proper functionality when it is not frequently used.
- Keep power bank dry at all times and avoid exposing it under wet or hot circumstances.
- Do not use any chemical compound, such as soap or detergents, to cleanse power bank.
- Dismounting or throwing power bank into water or fire is extremely dangerous and strongly forbidden.
- Please stop using power bank immediately when it appears to be expended, leaked or smelled.
- Power bank is not designed and suitable for disabilities and children.