

CAM-3HD



Digital Camcorder
User's Manual

HD VIDEO
720p(1280X720)



Made in Korea

Product Warranty

- We warrants this product against all defects in material and workmanship for a period of one year from the date of purchase by end user. The conditions for warranty are as follows:
- The warranty is valid only if the original receipt issued to the original purchaser by the dealer is presented with the product to be repaired or replaced.
- The warranty is void if the serial number, date of purchase and product label had been removed.
- The warranty does not cover any failure or damage of the product due to normal wear and tear, physical abuse, improper installation, misuse, modification or repairs by unauthorized third parties.
- We does not assume responsibility for any loss or damage incurred during shipment and as a result of force majeure.
- We is not liable for any incidental or consequential damages arising from the use or misuse of the product.
- All warranty claims are limited to repair or replacement of the defective product at the sole discretion of We.
- If Manufacturer repairs or replaces the product, the repaired or replaced product shall be warranted for the remaining time of the original warranty period. Repair or replacement may involve the use of functionally equivalent reconditioned units. Replaced part or product becomes the property of We.
- Consumable components, such as batteries, are not included in the warranty obligation.

Disclaimer Notice

The manufacturer shall not be liable for errors contained herein or for incidental or consequential damages in connection with the furnishing, performance or use of this material. This document contains proprietary information, which is protected by international patent applications and copyright. All rights reserved. No part of this document may be copied, reproduced or translated without prior written consent of the manufacturer. The manufacturer reserves the right to revise this publication and to make changes from time to time in the contents hereof without obligation to notify any person

of such revisions or changes. The manufacturer also reserves the right to change the specifications without notice.

European CE notice to users and product statements

This product is CE marked according to the provisions of the R & TTE Directive (99/5/EC). Hereby, We, declares that this product is in compliance with the essential requirements and other relevant provisions of Directive 1999/5/EC. For further information, please contact.

FCC notice to users and product statements

THIS DEVICE COMPLIES WITH PART 15 OF THE FCC RULES. Operation is subject to the following two conditions: (1) this device may not cause harmful interference, and (2) this device must accept any interference received, including interference that may cause undesired operation.

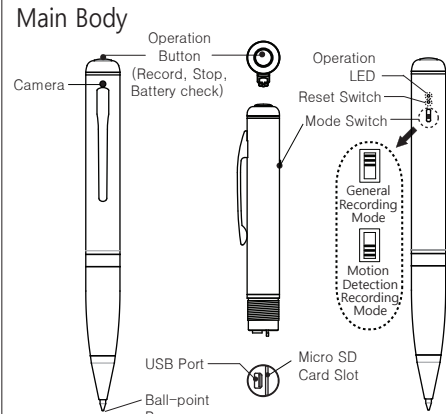
CAUTION: Changes or modifications not expressly approved by the party responsible for compliance could void the user's authority to operate the equipment.

WEEE Directive 2002/96/EC Art. 11(2)

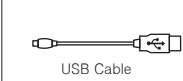


The use of the symbol indicates that this product may not be treated as household waste. By ensuring this product is disposed of correctly, you will help prevent potential negative consequences for the environment and human health, which could otherwise be caused by inappropriate waste handling of this product. For more detailed information about recycling of this product, please contact your local city office, your household waste disposal service or the shop where you purchased the product.

Name of Each Part

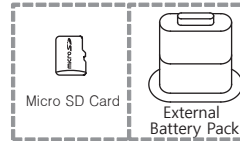


Accessories



USB Cable

Option



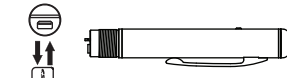
Micro SD Card
External Battery Pack

Battery Life Time	Continuous recording	Motion detection recording standby
Internal battery	max 1 hr	max 1.5 hr
Internal + Battery Pack	max 3.5 hrs	max 5.5 hrs

Notice: Please make sure to charge the battery before use.

Micro SD Card

- Since this device does not have the internal memory, make sure to check the Micro SD card was loaded.
- When loading the Micro SD card, push the Micro SD card closely to the bottom in its socket of the device.
- When unloading the Micro SD card, push the groove of Micro SD card smoothly out using finger-nail.



Micro SD Card

File management and delete

Saving the recorded files

- In case of general video recording files, file names are created and saved from HD_0001 to HD_9999 sequentially with "AVI" extension in VIDEO folder.
 - In case of motion detection recording files, file names are created and saved from M_0001 to M_9999 sequentially with "AVI" extension in MOTION folder.
 - In case of recording in state that the middle part of files are empty, recording file is created between file and file.
- Ex.) In case of recording in state that the files of HD_0001 and HD_0003 exist, HD_0002 file is created and in case of recording again, HD_0004 file is created.

File management and delete

- Insert the Micro SD Card into the device first, then connect the device into the USB port of the PC using provided USB Cable.
- You can check, manage, or delete files, which are saved into the Removable Disk using Windows Explorer.

Operation Guide -1

* Caution : In case of separating it from PC or charger, please record after LED flickering is off.

HD video recording

- Select Mode Switch to general recording mode(push it up)
- Press and hold Operation Button more than three seconds.
- When power is on, blue LED blinks two times and recording starts. (LED is off during recording)
- When you press and hold Operation Button more than three seconds during recording, blue LED blinks five times quickly and recorded video is saved and power is turned off.

* Recorded files are split and saved per ten minutes automatically for safe recording.

Motion detection recording

- Select Mode Switch to motion detection recording mode(push it down)
- Press and hold Operation Button more than three seconds.
- When power is turned on, green LED blinks two times and recording is ready.
- When motion is detected at camera, recording starts. (LED is turned off during recording)
- When you press and hold Operation Button more than three seconds, green LED blinks five times quickly and recorded video is saved and power is turned off.

* Motion detection file is recorded for ten minutes and it moves to motion detection recording mode. When motion is detected again, it repeats recording for ten minutes.

In case recording does not work

In case of following situations, recording does not work. Please be sure to take measures for recording.

- In case battery needs charging
Phenomenon : red LED blinks five times quickly and power is turned off after recording starts

Solution : Charge the product by using PC or AC charger.

- In case there is no memory
Phenomenon : red LED is turned on for three seconds and power is turned off after recording starts.

Solution : Insert micro SD card into product.

- In case memory is full
Phenomenon : red LED is turned on for three seconds and power is turned off after recording starts.

Solution : Connect product into PC and move important recorded contents into PC and format or delete memory.

Specification

Item	Specification	
Max. Video	16GB : 2 hours	32GB : 4 hours
Recording Time	64GB : 8 hours	128GB : 16 hours
Video Quality	MJPEG AVI 1280 X 720 Max 30fps / PCM 128Kbps MONO	
Dimension	14mm(D) x 140mm(H)	
Weight	27g	
Storage Media	Micro SD Card	
External Power	DC 5V 0.5A (Long-time Recording)	
Battery Life Time	max 1 hour in general recording time max 1.5 hour in motion detection stand by time	
Operation Temp.	0 °C ~ 40 °C	

- * Recording time can be different according to the performance of SD card.
- * Micro SD card more than 64GB can be played back on the O/S more than Windows 7.
- * Product specification and appearance can be changed without notice for the improvement of quality.

Warranty Card

Product	Digital Camcorder
Model	CAM-3HD
Purchasing date	
Purchasing place	
Tel.	
Others	
Period	1 year
Customer	Name
	Address
	Tel.

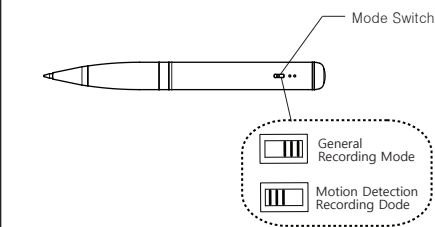
Changing Mode

- You can select general recording mode and motion detection recording mode by mode switch.
- You can perform the below operation according to each mode.
- General recording : HD video recording.
- Motion detection recording : when there is no motion, recording is on standby and when motion is detected, it records by the unit of ten minutes.

* Motion detection function can take necessary video only and can take long-time recording according to memory in case of connecting external power supply(battery pack, AC adaptor).

* Motion detection function can use memory efficiently, and Internal battery can stand by for max 1 hour 30 minutes.

- When you change mode during recording, current recording is finished automatically and recording starts with changed mode.

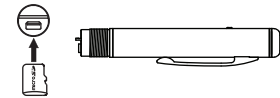


* Before video recording, please be sure to insert micro SD card into product.
* Do not separate micro SD card during operation. That can be a cause of breakdown and malfunction.
Be sure to separate micro SD card after turning off the power.

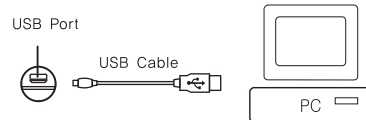
Playing on PC

Watching recorded video on PC

- Insert the Micro SD Card into the device first,



- Connect the device into the USB port of the PC using provided USB Cable.



- Click the recored Video file from the folder in My Computer > Removable Disk > VIDEO or MOTION
- General recording file can be played back in the folder of VIDEO by the double-click of file and motion detection recording file can be played back in the folder of MOTION by the double-click of file.

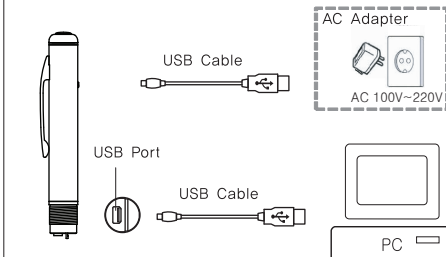
* Playback the recorded video using any media player such as GOM Player, KMPlayer.

* If the video or audio does not playback, please download and install proper codecs from Internet so as to mach with your media player.

* Micro SD card more than 64GB can be played back on the O/S more than Windows 7.

Charging Battery

- Connect the USB cable directly to the PC or provided AC Adapter so as to start charging like the following picture
- During battery charging, operation LED is turned on in red and it blinks in red when charging is completed.
- Generally it might take 2~3 hours to complete the charging.
- Even in the battery charging, you can record Video and Voice using "Operation Button".



Reset

If the device happen to occur the malfunction, push reset S/W so as to work properly using the edge of sharpen pencil,



Longtime Recording

CAM-3HD supports longtime recording for video(up to 8 hours video recording based on 64GB of Micro SD card) using external battery pack, power from USB port of the PC, or connected USB cable to AC adapter.

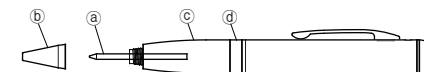
- Connect the USB cable to the USB port of the PC or provided AC adapter. (refer to the Charging battery)
- While charging, press "Operation Button" slightly and it releases the USB connection to start recording the video or voice depends on the status of the Mode Switch. (it charges continuously while recording video or voice if the USB cable is connected to PC or AC adapter)
- Since it uses the external power, no matter what memory capacity it records till memory of the Micro SD card would be not enough space to record.

Using as a ball pen

When you hold the ring(Ⓐ) and spin the rotating part(Ⓑ) right and left, ball pen refill(Ⓒ) comes out or go in.

For the change of ball pen refill(Ⓒ), please hold rotating part(Ⓒ) and continue to turn the part of refill(Ⓒ) to the left and when it is separated, pull ball pen refill(Ⓒ) out and insert new one into hole carefully.

* Ball pen refill standard : 5799-236-410(41mm)



Operation Guide -2

Battery remains check

When you press Operation Button shortly during recording, battery remains are indicated by Operation LED.

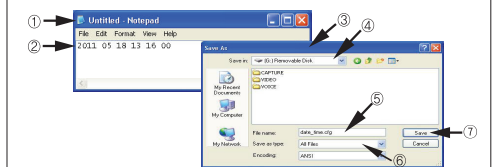
- Battery remains 100~80% : green LED is turned on for three seconds.
- Battery remains 80~30% : blue LED is turned on for three seconds.
- Battery remains 30~0% : red LED is turned on for three seconds.

Time Setup

- Please insert micro SD card into device and connect device into PC.
- Please create the file of time setup(date_time.cfg) in the root folder of micro SD card by using the note pad of Windows, etc.

How to create the file of time setup

- Execute note pad.
- Enter date, time in order of "year month day hour minute second" from the first column.
- Click file and select "save as".
- Select removable disk as a place to save.
- Enter "date_time.cfg" as a file name.
- Select "all file" as a file type.
- Click "save" and close window for completion.



- When you separate device from the USB port of PC, device power is turned off and on automatically and device time is set up to the time set at "date_time.cfg".
- When time setup is completed, device power is turned off automatically.